

CENTRIFUGAL PUMPS

PUMP ACCESSORIES
PAGES 95

SUCTION BASKET STRAINERS
BASE PLATES

2" POLY PUMPS
PAGES 96 - 109

GAS ENGINE PUMPS
PUMP ONLY/ BEARING PEDESTAL
WET SEAL WITH GAS ENGINE
ELECTRIC MOTOR DRIVEN
HYDRAULIC MOTOR DRIVEN
MANIFOLD

3" POLY PUMPS
PAGES 110- 119

GAS ENGINE PUMPS
PUMP ONLY/ BEARING PEDESTAL
MANIFOLD
HYDRAULIC MOTOR DRIVEN
WET SEAL WITH GAS ENGINE

1½" & 2" CAST IRON PUMPS
PAGES 120 - 127

GAS ENGINE PUMPS
PUMP ONLY/ BEARING PEDESTAL
WET SEALS
ELECTRIC MOTOR DRIVEN
HYDRAULIC MOTOR DRIVEN

2" CAST IRON 222
SERIES PUMPS
PAGES 128- 131

GAS ENGINE PUMPS
PUMP ONLY/ BEARING PEDESTAL
HYDRAULIC MOTOR DRIVEN
ELECTRIC MOTOR DRIVEN
MANIFOLD WET SEAL

3" CAST IRON PUMPS
PAGES 132 - 137

GAS ENGINE PUMPS
PUMP ONLY/ BEARING PEDESTAL
WET SEALS
HYDRAULIC MOTOR DRIVEN

3" CAST IRON 333
SERIES PUMPS
PAGES 138 - 139

GAS ENGINE PUMPS
PUMP ONLY/ BEARING PEDESTAL
ELECTRIC MOTOR DRIVEN

3" CAST IRON MANIFOLD WET
SEAL M332 SERIES PUMPS
PAGES 140 - 143

GAS ENGINE PUMPS
PUMP ONLY/ BEARING PEDESTAL
ELECTRIC MOTOR DRIVEN
HYDRAULIC MOTOR DRIVEN

4" CAST IRON 444
SERIES PUMPS
PAGES 144 - 145

GAS ENGINE PUMPS
PUMP ONLY

2" & 3" STAINLESS STEEL
PUMPS
PAGES 146- 153

GAS ENGINE PUMPS
PUMP ONLY/ BEARING PEDESTAL
ELECTRIC MOTOR DRIVEN
HYDRAULIC MOTOR DRIVEN

SUCTION BASKET STRAINERS



SUCTION BASKET STRAINERS

| PART NO | DESCRIPTION | QTY |
|---------|------------------------------|-----|
| 200SBS | 2" FEMALE THREAD POLY BASKET | 1 |
| 300SBS | 3" FEMALE THREAD POLY BASKET | 1 |

FEATURES

- Made of polyethylene
- Prevents plugging and damage to pump while suctioning from streams or ponds.

BASE PLATE ASSEMBLY



BASE PLATE ASSEMBLY

| PART NO | DESCRIPTION | QTY |
|---------|--|-----|
| 18700 | BASE PLATE ASSEMBLY INCLUDES PLATE, COUPLING GUARD, BOLT BAG AND SHIMS | 1 |

FEATURES

- Universal fit for 1½", 2" and 3" polypropylene or cast iron pumps

CENTRIFUGAL PUMPS

2" POLY PUMPS

FEATURES

- Precision molded construction
- Lightweight
- Corrosion resistant
- Superior design
- Low maintenance
- EPDM standard, FKM available
- Engine warranty service available at authorized Briggs & Stratton® and Honda® dealers



2" POLY PUMPS W/GAS ENGINES

| PART NO | DESCRIPTION | HP | QTY | SKID QTY |
|-----------|--|-----|-----|----------|
| 200PH-5 | 2" POLY PUMP W/5.5 HP HONDA® ENGINE | 5.5 | 1 | 12 |
| 200PH-5E | 2" POLY PUMP W/5.5 HP HONDA® ENGINE W/ ELECTRIC START | 5.5 | 1 | 12 |
| 200PH-5V | 2" POLY PUMP W/5.5 HP HONDA® ENGINE W/FKM & 316 SS SEAL | 5.5 | 1 | 12 |
| 200PH6 | 2" POLY PUMP W/6.5 HP HONDA® ENGINE | 6.5 | 1 | 12 |
| 200P6PRO | 2" POLY PUMP W/6.5 HP BRIGGS & STRATTON® ENGINE PRO SERIES | 6.5 | 1 | 12 |
| 200P6PROE | 2" POLY PUMP W/6.5 HP BRIGGS & STRATTON® ENGINE PRO SERIES W/ELECTRIC START | 6.5 | 1 | 12 |
| 200P6PROV | 2" POLY PUMP W/6.5 HP BRIGGS & STRATTON® ENGINE PRO SERIES W/FKM & 316 SS SEAL | 6.5 | 1 | 12 |



WARNING! DO NOT RUN PUMP DRY, RESTRICT OR REDUCE PORT SIZES OR DEAD HEAD PUMP



WARNING! DO NOT USE WITH FLAMMABLE LIQUIDS



2" POLY PUMP BEARING PEDESTALS

| PART NO | DESCRIPTION | HP | QTY | SKID QTY |
|---------|--|-----|-----|----------|
| 200PB | 2" POLY BEARING PEDESTAL W/ 3/4" SHAFT & 3 VANE IMPELLER | N/A | 1 | 18 |
| 205PB | 2" POLY BEARING PEDESTAL W/ 3/4" SHAFT & 5 VANE IMPELLER | N/A | 1 | 18 |
| 205PB-V | 2" POLY BEARING PEDESTAL W/ 3/4" SHAFT & 5 VANE IMPELLER W/FKM & 316 SS SEAL | N/A | 1 | 18 |



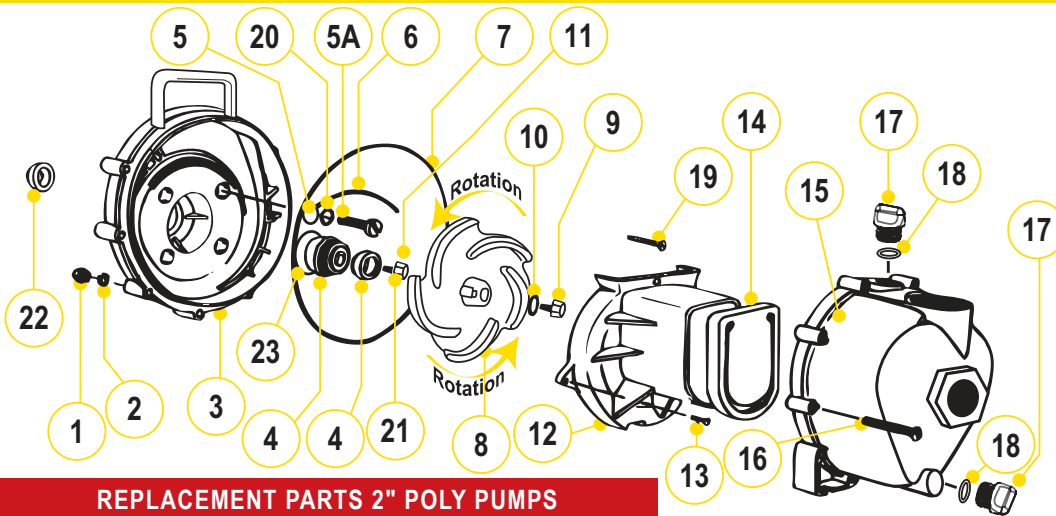
2" POLY PUMP ONLYS

| PART NO | DESCRIPTION | HP | QTY | SKID QTY |
|---------|---|-----|-----|----------|
| 200PO | 2" POLY PUMP ONLY* W/ 3 & 5 VANE IMPELLER | N/A | 1 | 27 |
| 200PO-V | 2" POLY PUMP ONLY* W/ 3 & 5 VANE IMPELLER W/FKM & 316 SS SEAL | N/A | 1 | 27 |

Note: Requires 3/4" shaft on motor

CENTRIFUGAL PUMPS

2" POLY PUMPS

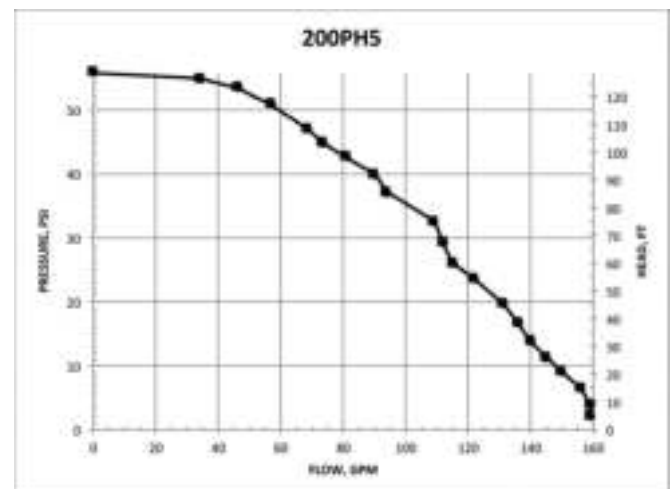
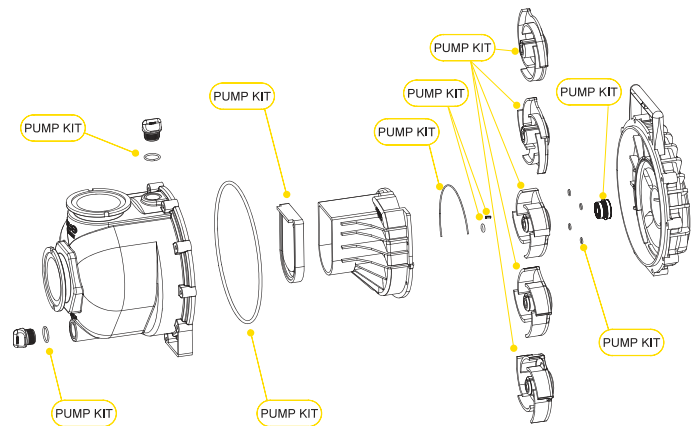


REPLACEMENT PARTS 2" POLY PUMPS

| ITEM | PART NO | DESCRIPTION | QTY |
|------|----------|---|-----|
| 1 | V07019 | SS BODY NUTS | 10 |
| 2 | V07018 | SS LOCK WASHERS | 10 |
| 3 | 12703A | POLY PUMP REAR BRACKET | 1 |
| 4 | 12713 | SEAL ASSEMBLY | 1 |
| 4 | 12713V | FKM SEAL ASSEMBLY | 1 |
| 5 | 12717 | O-RING FOR SCREW HEAD | 4 |
| 5 | 12717V | FKM O-RING FOR SCREW HEAD | 4 |
| 5A | 12715A | SS BRACKET SCREWS | 4 |
| 6 | 12754 | O-RING SEGMENT | 1 |
| 6 | 12754V | FKM O-RING SEGMENT | 1 |
| 7 | 12719A | BODY O-RING | 1 |
| 7 | 12719AV | FKM BODY O-RING | 1 |
| 8 | 12772 | 5 VANE IMPELLER | 1 |
| 8 | 12771A | 3 VANE IMPELLER | 1 |
| 9 | 12765A | SS IMPELLER BOLT | 1 |
| 10 | A204 | O-RING | 1 |
| 10 | A204V | FKM O-RING | 1 |
| 11 | 12775A | IMPELLER HEX NUT | 1 |
| 12 | 12702A | POLY PUMP VOLUTE | 1 |
| 13 | 12725 | SS VOLUTE SCREWS | 1 |
| 14 | 12705 | POLY PUMP CHECK VALVE | 1 |
| 14 | 12705V | FKM CHECK VALVE | 1 |
| 15 | 12712A | BODY ASSEMBLY | 1 |
| 16 | 12720 | SS BODY SCREWS | 10 |
| 17 | 12777 | 1/2" PLUG | 2 |
| 18 | UV15163 | PRIME/DRAIN PLUG O-RING | 2 |
| 18 | UV15163V | FKM PRIME/DRAIN PLUG O-RING | 2 |
| 19 | 12900 | SS UPPER VOLUTE SCREW | 1 |
| 20 | 12901 | SS REAR BRACKET WASHER | 4 |
| 21 | 12902A | IMPELLER KEY | 1 |
| 22 | 12716 | POLY PUMP SLINGER | 1 |
| 23 | 12710 | O-RING FOR SEAL ASSEMBLY | 1 |
| 23 | 12710V | FKM O-RING FOR SEAL ASSEMBLY | 1 |
| N/S | 12882A | BEARING PEDESTAL | 1 |
| N/S | 12099 | 7/16"-14 X 1.25" HHCS | 1 |
| KIT | 12000A | POLY PUMP EPDM REPAIR KIT (ITEMS 4-8, 10, 14, 18, 21-23 & 12099) | 1 |
| KIT | 12000AV | POLY PUMP FKM REPAIR KIT (ITEMS 4-8, 10, 14, 18, 21-23 & 12099) | 1 |
| KIT | 12999A | PUMP SEAL/O-RING KIT (ITEMS 5-7, 10, 18, 22, 23 & 12099) | 1 |
| KIT | 12999AV | FKM PUMP SEAL/O-RING KIT (ITEMS 5-7, 10, 18, 22, 23 & 12099) | 1 |

KITS 2" POLY PUMPS

| PART NO | REPAIR KIT NO | SEAL KIT NO |
|-----------|---------------|-------------|
| 200PH-5 | 12000A | 12999A |
| 200PH-5E | 12000A | 12999A |
| 200PH-5V | 12000AV | 12999AV |
| 200PH6 | 12000A | 12999A |
| 200P6PRO | 12000A | 12999A |
| 200P6PROE | 12000A | 12999A |
| 200P6PROV | 12000AV | 12999AV |
| 200PB | 12000A | 12999A |
| 205PB | 12000A | 12999A |
| 205PB-V | 12000AV | 12999AV |
| 200PO | 12000A | 12999A |
| 200PO-V | 12000AV | 12999AV |



CENTRIFUGAL PUMPS

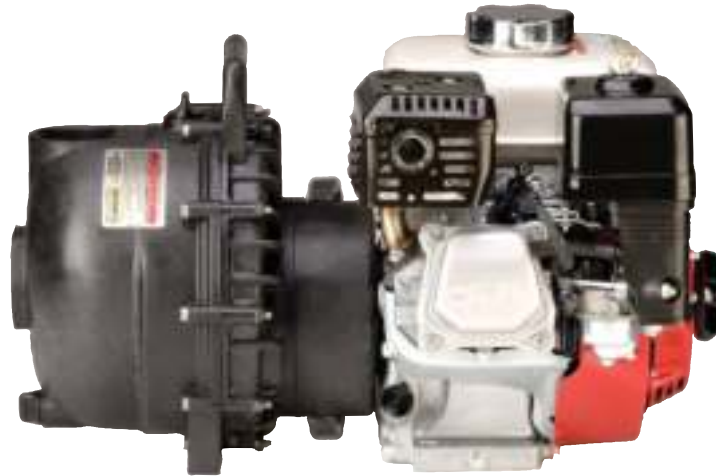
2" POLY WET SEAL PUMPS

FEATURES

- Run dry capability
- Double seal contained in ethylene glycol reservoir. Carbon ceramic seal faces with stainless steel cup and spring with EPDM rubber.
- Pump end separated from engine
- V-shaped for quicker priming
- Engine warranty service available at authorized Briggs & Stratton® and Honda® dealers



WARNING! DO NOT USE WITH FLAMMABLE LIQUIDS



2" POLY WET SEAL PUMPS W/GAS ENGINES

| PART NO | DESCRIPTION | HP | QTY | SKID QTY |
|---------|--|-----|-----|----------|
| 200PH5W | 2" POLY WET SEAL PUMP W/5.5 HP HONDA® ENGINE | 5.5 | 1 | 12 |

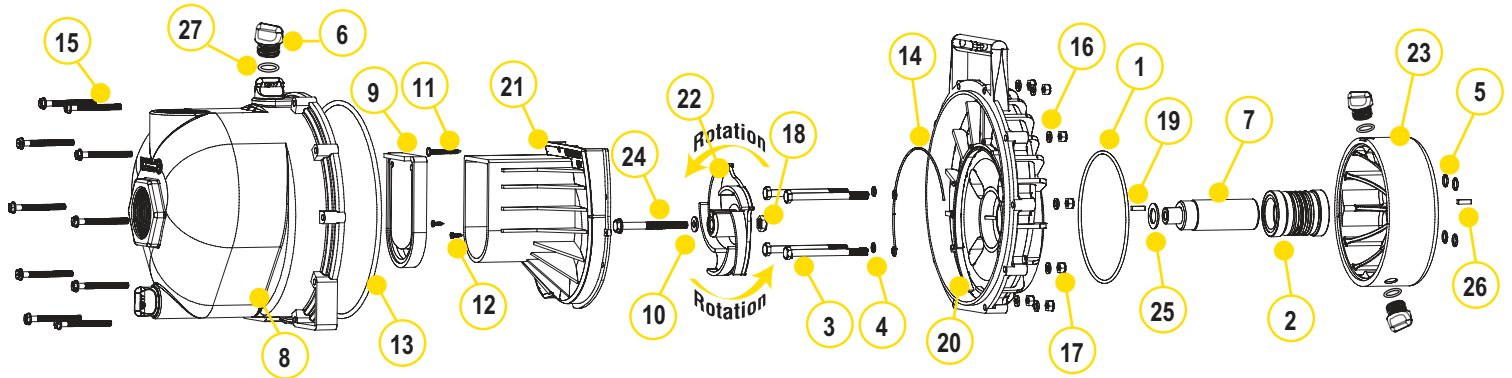


2" POLY WET SEAL PUMP ONLY

| PART NO | DESCRIPTION | HP | QTY | SKID QTY |
|---------|---|-----|-----|----------|
| 205POW | 2" POLY WET SEAL PUMP ONLY, 5 VANE IMPELLER WITH EPDM SEALS | N/A | 1 | 27 |

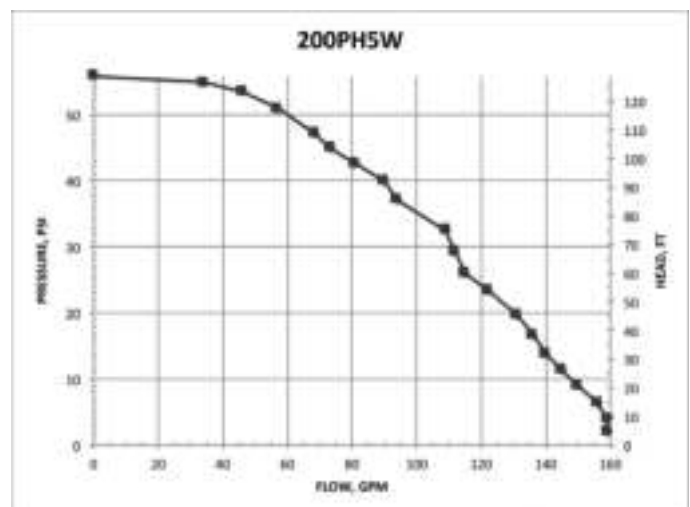
CENTRIFUGAL PUMPS

2" POLY WET SEAL PUMPS



REPLACEMENT PARTS 2" POLY PUMPS

| ITEM | PART NO | DESCRIPTION | QTY |
|------|---------|--------------------------------|-----|
| 1 | 13719 | O-RING | 1 |
| 2 | 15035E | EPDM MECHANICAL SEAL ASSEMBLY | 1 |
| 3 | 13034 | 5/16" -24 X 3 3/4" HHCS | 4 |
| 4 | 12717 | O-RING FOR BRACKET SCREW | 4 |
| 5 | 12709 | O-RING | 4 |
| 6 | 12777 | 1/2" PLUG | 4 |
| 7 | 12155 | ADAPTER SHAFT | 1 |
| 8 | 12712A | BODY ASSEMBLY | 1 |
| 9 | 12705 | CHECK VALVE | 1 |
| 10 | A204 | IMPELLER BOLT GASKET | 1 |
| 11 | 12900 | #10 X 1 1/2" PPH SMS | 1 |
| 12 | 12725 | #6 X 1/2" PPH SMS | 2 |
| 13 | 12719A | BODY O-RING | 1 |
| 14 | 12754 | O-RING SEGMENT | 1 |
| 15 | 12720 | 1/4" - 20 X 2 1/2" SL IND HWHS | 10 |
| 16 | V07018 | 1/4" LOCK WASHER | 10 |
| 17 | V07019 | 1/4" - 20 HEX NUT | 10 |
| 18 | 12775A | 7/16" - 14 HEX NUT | 1 |
| 19 | 12902A | 3/16" SQ. X 5/8" KEY | 2 |
| 20 | 12707W | WET SEAL REAR BRACKET | 1 |
| 21 | 12702A | VOLUTE | 1 |
| 22 | 12772 | 5 VANE IMPELLER | 1 |
| 23 | 12202W | WET SEAL RESERVOIR | 1 |
| 24 | 12766 | 5/16" - 24 X 3/4" HFS | 1 |
| 25 | CV10175 | GASKET | 1 |
| 26 | 12902A | 1/4" SQ. 3/4" KEY STOCK | 1 |
| 27 | UV15163 | O-RING FOR DRAIN PLUG | 4 |



CENTRIFUGAL PUMPS

2" POLY PUMPS WITH ELECTRIC MOTORS

FEATURES

- Additional drive unit protection with added 1" spacer for ultimate protection
- The "Super Slinger" included for even more drive unit protection (not shown)



WARNING! DO NOT RUN PUMP DRY, RESTRICT OR REDUCE PORT SIZES OR DEAD HEAD PUMP



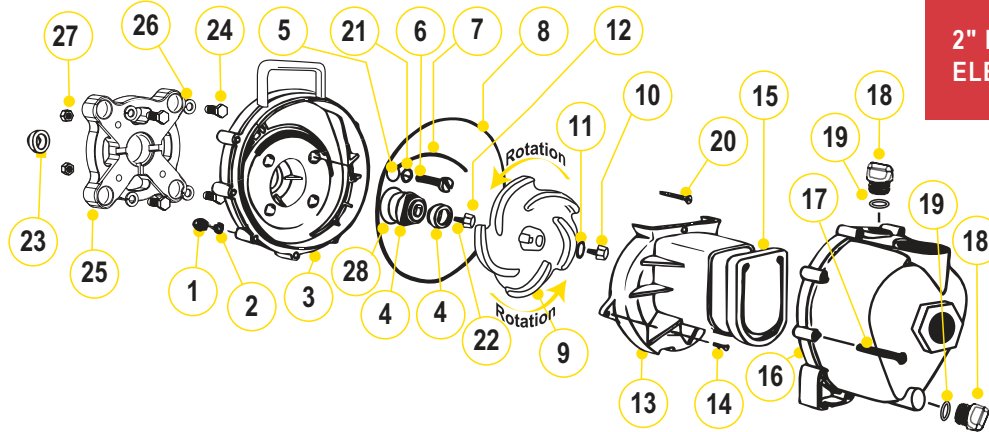
WARNING! DO NOT USE WITH FLAMMABLE LIQUIDS

2" POLY PUMPS W/ELECTRIC MOTORS

| PART NO | DESCRIPTION | HP | QTY | SKID QTY |
|-----------|--|----|-----|----------|
| 234PPE5 | 2" POLY PUMP W/5 HP THREE PHASE ELECTRIC MOTOR W/ EPDM ELASTOMERS | 5 | 1 | 3 |
| 234PPE5V | 2" POLY PUMP W/5 HP THREE PHASE ELECTRIC MOTOR W/FKM ELASTOMERS | 5 | 1 | 3 |
| 234PPE51 | 2" POLY PUMP W/5 HP SINGLE PHASE ELECTRIC MOTOR W/ EPDM ELASTOMERS | 5 | 1 | 3 |
| 234PPE51V | 2" POLY PUMP W/5 HP SINGLE PHASE ELECTRIC MOTOR W/FKM ELASTOMERS | 5 | 1 | 3 |

CENTRIFUGAL PUMPS

2" POLY PUMPS WITH ELECTRIC MOTORS



REPLACEMENT PARTS 2" POLY PUMPS

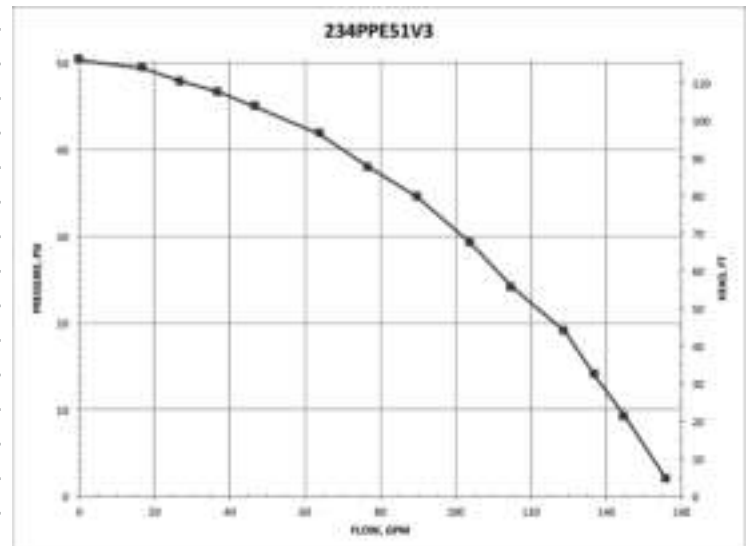
| ITEM | PART NO | DESCRIPTION | QTY |
|------|----------|-----------------------------------|-----|
| 1 | V07019 | SS BODY NUTS | 10 |
| 2 | V07018 | SS LOCK WASHERS | 10 |
| 3 | 12703A | POLY PUMP REAR BRACKET | 1 |
| 4 | 12713 | SEAL ASSEMBLY EPDM | 1 |
| 4 | 12713V | SEAL ASSEMBLY FKM | 1 |
| 5 | 12717 | SCREW HEADS O-RING EPDM | 4 |
| 5 | 12717V | SCREW HEADS O-RING FKM | 4 |
| 6 | N/A | SS BRACKET SCREWS | 4 |
| 7 | 12754 | O-RING SEGMENT EPDM | 1 |
| 7 | 12754V | O-RING SEGMENT FKM | 1 |
| 8 | 12719A | BODY O-RING EPDM | 1 |
| 8 | 12719AV | BODY O-RING FKM | 1 |
| 9 | 12772 | 5 VANE IMPELLER | 1 |
| 10 | 12765A | SS IMPELLER BOLT | 1 |
| 11 | A204 | O-RING | 1 |
| 11 | A204V | FKM O-RING | 1 |
| 12 | 12775A | IMPELLER HEX NUT | 1 |
| 13 | 12702A | POLY PUMP VOLUTE | 1 |
| 14 | 12725 | SS VOLUTE SCREWS | 2 |
| 15 | 12705 | POLY PUMP CHECK VALVE EPDM | 1 |
| 15 | 12705V | POLY PUMP CHECK VALVE FKM | 1 |
| 16 | 12712A | BODY ASSEMBLY EPDM | 1 |
| 16 | N/A | BODY ASSEMBLY FKM | 1 |
| 17 | 12720 | SS BODY SCREWS | 10 |
| 18 | 12777 | 1/2" PLUG | 2 |
| 19 | UV15163 | PRIME/DRAIN PLUG O-RING | 2 |
| 19 | UV15163V | FKM PRIME/DRAIN PLUG O-RING | 2 |
| 20 | 12900 | SS UPPER VOLUTE SCREW | 1 |
| 21 | 12901 | SS REAR BRACKET WASHER | 4 |
| 22 | 12902A | IMPELLER KEY | 1 |
| 23 | 12716 | PUMP SLINGER | 1 |
| 24 | 17704 | 3/8"-16 X 1.25" HHCS | 8 |
| 25 | 12046 | 56C FRAME ADAPTER | 1 |
| 26 | V20018 | LOCK WASHER FOR 56C FRAME ADAPTER | 8 |
| 27 | V10119 | NUT FOR 56C FRAME ADAPTER | 4 |
| 28 | 12710 | O-RING FOR SEAL ASSEMBLY | 1 |
| 28 | 12710V | FKM O-RING FOR SEAL ASSEMBLY | 1 |

REPLACEMENT PARTS 2" POLY PUMPS

| ITEM | PART NO | DESCRIPTION | QTY |
|------|---------|--|-----|
| N/S | 17701 | BASE PLATE | 1 |
| N/S | 12099 | 7/16"-14 X 1.25" HHCS | 1 |
| N/S | 12052 | 56C FRAME ADAPTER SHAFT FOR 200PEO | 1 |
| KIT | 12756 | 56C FRAME ADAPTER KIT (ITEMS 6, 22, 24-27, 12052, 12053, 15751, 15752) | 1 |
| KIT | 12000A | POLY PUMP EPDM REPAIR KIT (ITEMS 4, 5, 7, 8, 9, 11, 15, 19, 22-23 & 12099) | 1 |
| KIT | 12000AV | POLY PUMP FKM REPAIR KIT (ITEMS 4, 5, 7, 8, 9, 11, 15, 19, 22-23 & 12099) | 1 |
| KIT | 12999A | PUMP SEAL/O-RING KIT (ITEMS 4, 5, 7, 8, 11, 19, 23) | 1 |
| KIT | 12999AV | FKM PUMP SEAL/O-RING KIT (ITEMS 4, 5, 7, 8, 11, 19, 23) | 1 |

KITS 2" POLY PUMPS

| PART NO | REPAIR KIT NO | SEAL KIT NO | FRAME ADAPTER KIT |
|-----------|---------------|-------------|-------------------|
| 234PPE5 | 12000A | 12999A | 12756 |
| 234PPE5V | 12000AV | 12999AV | 12756 |
| 234PPE51 | 12000A | 12999A | 12756 |
| 234PPE51V | 12000AV | 12999AV | 12756 |



CENTRIFUGAL PUMPS

2" POLY PUMPS WITH HYDRAULIC MOTORS

FEATURES

- Precision molded construction
- Lightweight
- Corrosion resistant
- Low maintenance
- Hydraulic fluid capacity is minimum 6 gallons and maximum 10 gallons
- Open or closed system
- 3600 R.P.M.
- Recommendation to use the motor spool control valve or a suitable equivalent. The lack of such a valve in this circuit may cause failure to the hydraulic motor.



2" POLY PUMPS W/HYDRAULIC MOTORS

| PART NO | DESCRIPTION | HP | QTY | SKID QTY |
|---------|---|------|-----|----------|
| 200PHA | 2" POLY PUMP WITHOUT HYDRAULIC MOTOR | N/A | 1 | 27 |
| 200PHY | 2" POLY PUMP W/12 HP HYDRAULIC MOTOR | 12.0 | 1 | 18 |
| 200PHYW | 2" POLY WET SEAL PUMP W/12 HP HYDRAULIC MOTOR | 12.0 | 1 | 18 |

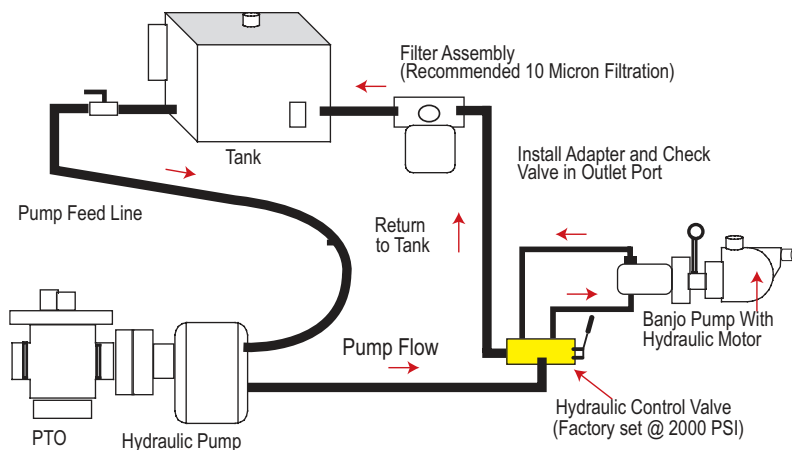


WARNING! DO NOT RUN PUMP DRY, RESTRICT OR REDUCE PORT SIZES OR DEAD HEAD PUMP



WARNING! DO NOT USE WITH FLAMMABLE LIQUIDS

SPOOL VALVE ASSEMBLY DIAGRAM

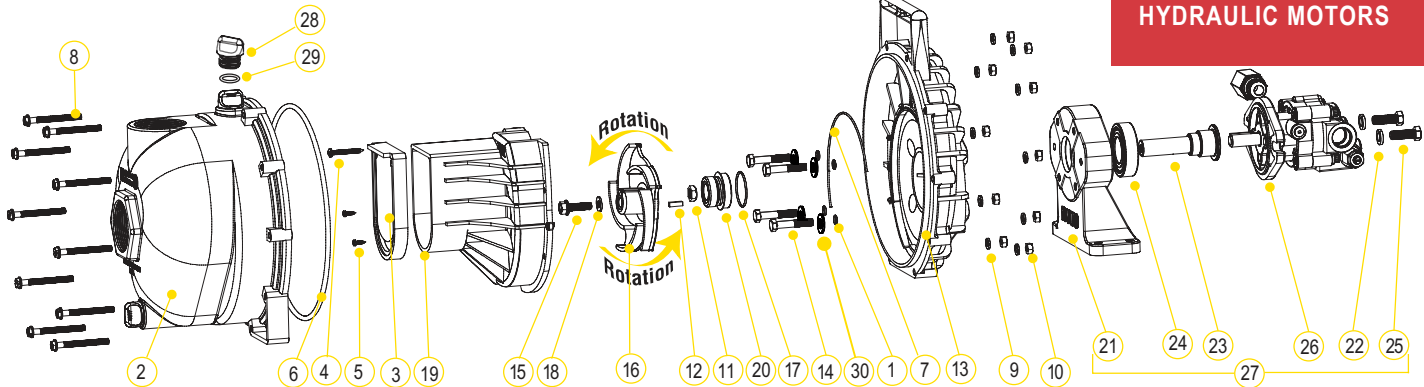


HYDRAULIC MOTOR SPOOL VALVE

| PART NO | DESCRIPTION | HP | QTY |
|---------|-----------------------------|-----|-----|
| HSV1000 | HYDRAULIC MOTOR SPOOL VALVE | N/A | 1 |

CENTRIFUGAL PUMPS

2" POLY PUMPS WITH HYDRAULIC MOTORS



REPLACEMENT PARTS 2" POLY PUMPS

| ITEM | PART NO | DESCRIPTION | QTY |
|------|---------|--|-----|
| 1 | 12717 | O-RING FOR SCREW HEADS | 4 |
| 2 | 12712A | BODY ASSEMBLY | 1 |
| 3 | 12705 | CHECK VALVE | 1 |
| 4 | 12900 | SS UPPER VOLUTE SCREW | 1 |
| 5 | 12725 | SS VOLUTE SCREWS | 2 |
| 6 | 12719A | BODY O-RING | 1 |
| 7 | 12754 | O-RING SEGMENT | 1 |
| 8 | 12720 | SS BODY SCREWS | 10 |
| 9 | V07018 | SS LOCK WASHERS | 10 |
| 10 | V07019 | SS BODY NUTS | 10 |
| 11 | 12775A | IMPELLER HEX NUT | 1 |
| 12 | 12902A | IMPELLER KEY | 1 |
| 13 | 12703A | POLY PUMP REAR BRACKET | 1 |
| 14 | 12715A | 5/16"-24 X 1.75" HHCS | 4 |
| 15 | 12765A | SS IMPELLER BOLT | 1 |
| 16 | 12772 | 5 VANE IMPELLER | 1 |
| 17 | 12710 | O-RING FOR SEAL ASSEMBLY | 1 |
| 18 | A204 | O-RING | 1 |
| 19 | 12702A | POLY PUMP VOLUTE | 1 |
| 20 | 12713 | MECHANICAL SEAL ASSEMBLY | 1 |
| 21 | 12049F | HYDRAULIC PEDESTAL HOUSING | 1 |
| 22 | V20018 | 3/8" LOCK WASHER | 2 |
| 23 | 12055E | ADAPTER SHAFT | 1 |
| 24 | 17056E | BEARING | 1 |
| 25 | 18010SS | 3/8"-16 X 1.25" HHCS | 2 |
| 26 | HY1013 | HYDRAULIC MOTOR | 1 |
| 27 | 12600B | COMPLETE HYDRAULIC ASSEMBLY | 1 |
| 28 | 12777 | 1/2" PLUG | 2 |
| 29 | UV15163 | O-RING FOR PLUG | 2 |
| 30 | 12901 | WASHER (200PHA & 200PHY) | 4 |
| N/S | HY1003 | HYDRAULIC MOTOR SEAL KIT | 1 |
| KIT | 12000A | POLY PUMP EPDM REPAIR KIT (ITEMS 1, 3, 6, 7, 12, 16-18, 20, 12099) | 1 |
| KIT | 12999A | PUMP SEAL/O-RING KIT (ITEMS 1, 6, 7, 7, 17, 20, 29, 12099) | 1 |

KITS 2" POLY PUMPS

| PART NO | EPDM REPAIR KIT NO | EPDM SEAL KIT NO | HYDRAULIC MOTOR SEAL KIT |
|---------|--------------------|------------------|--------------------------|
| 200PHA | 12000A | 12999A | N/A |
| 200PHY | 12000A | 12999A | HY1003 |

HYDRAULIC MOTOR DATA

| | |
|------------------------|------------------------|
| U.S. GALLONS/REV. | 0.0025 |
| CUBIC INCHES/REV. | 0.580 |
| LITERS/REV. | 0.0097 |
| MAX HYDRAULIC PRESSURE | 2000 PSI |
| MIN HYDRAULIC PRESSURE | 200 PSI |
| INLET PORT | SAE 10 (7/8-14 UNF-2B) |
| OUTLET PORT | SAE 10 (7/8-14 UNF-2B) |
| MINIMUM GPM REQUIRED | 6 GPM 2400 RPM |
| MAXIMUM GPM REQUIRED | 10 GPM 4000 RPM |
| IDEAL GPM REQUIRED | 9 GPM 3600 RPM |

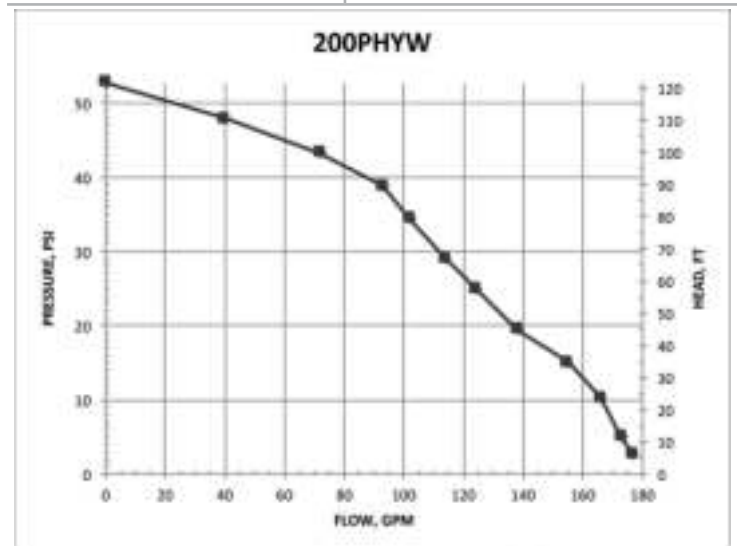
CONNECTION INFORMATION

| | |
|--------|----------|
| INLET | "A" PORT |
| OUTLET | "B" PORT |

SUPPLIED CHECK VALVE IS TO ENSURE PROPER ROTATION OF THE BANJO PUMP. PLACE CHECK VALVE IN OUTLET PORT (MARKED "B") FOR PROPER RIGHT HAND ROTATION.

SPOOL VALVE INFORMATION

| | |
|--------------------------|----------------------------|
| REQUIRED OUTLET FLOW | MIN 6 GPM / MAX 10 GPM |
| REQUIRED SYSTEM PRESSURE | MIN 600 PSI / MAX 3000 PSI |



CENTRIFUGAL PUMPS

2" POLY MANIFOLD PUMPS WITH GAS ENGINES

FEATURES

- Precision molded construction
- Lightweight
- Corrosion resistant
- Low maintenance
- See pages 41-47 on manifold fittings for easy plumbing.



2" POLY MANIFOLD PUMPS W/GAS ENGINES

| PART NO | DESCRIPTION | HP | QTY | SKID QTY |
|-----------|---|-----|-----|----------|
| M220PH5 | 2" POLY MANIFOLD PUMP W/5.5 HP HONDA® ENGINE | 5.5 | 1 | 12 |
| M220PH6 | 2" FP MANIFOLD PUMP W/6.5 HP HONDA® ENGINE | 6.5 | 1 | 12 |
| M220P6PRO | 2" FP MANIFOLD PUMP W/6.5 HP BRIGGS & STRATTON® PRO SERIES ENGINE | 6.5 | 1 | 12 |



WARNING! DO NOT RUN PUMP DRY, RESTRICT OR REDUCE PORT SIZES OR DEAD HEAD PUMP



WARNING! DO NOT USE WITH FLAMMABLE LIQUIDS

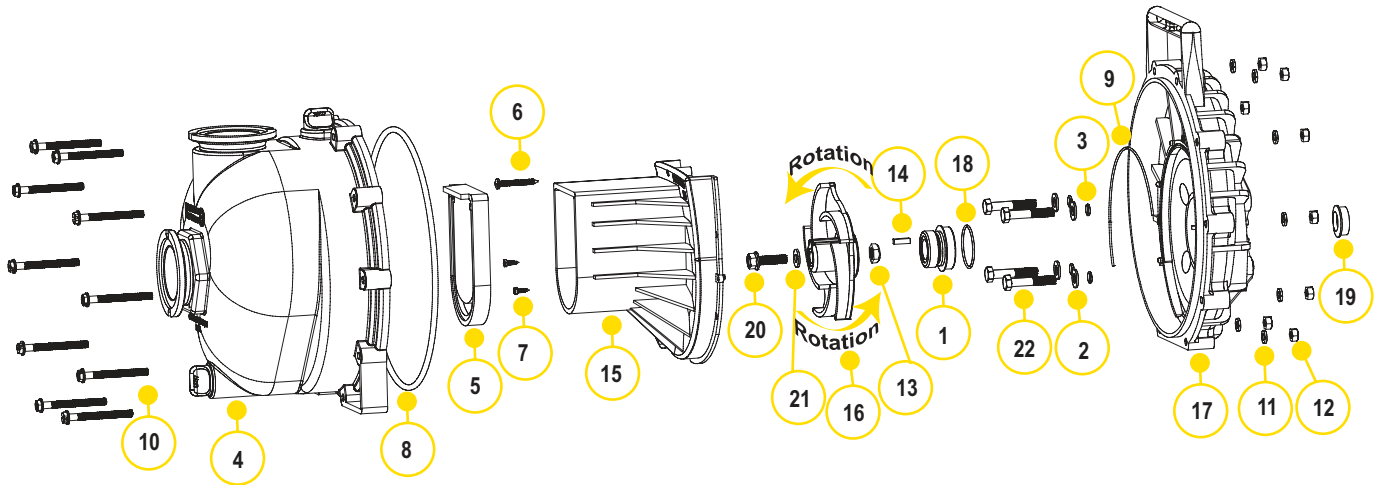


2" POLY MANIFOLD PUMP ONLY

| PART NO | DESCRIPTION | HP | QTY | SKID QTY |
|---------|--|-----|-----|----------|
| M225PO | 2" POLY MANIFOLD PUMP ONLY W/ 3/4" SHAFT & 5 VANE IMPELLER | N/A | 1 | 27 |

CENTRIFUGAL PUMPS

2" POLY MANIFOLD PUMPS WITH GAS ENGINES



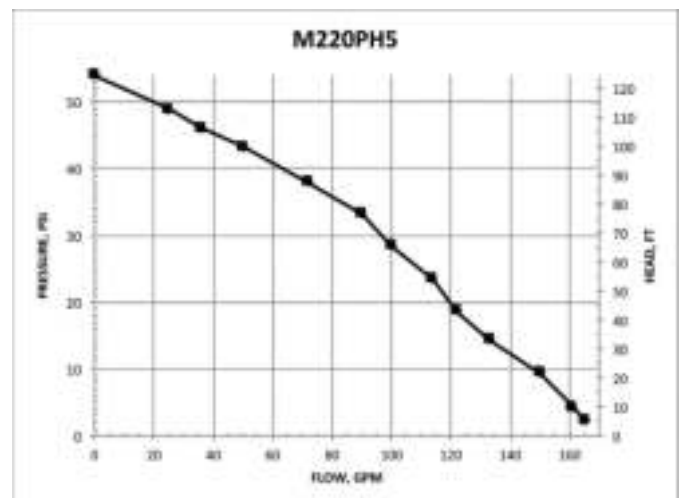
REPLACEMENT PARTS 2" POLY PUMPS

| ITEM | PART NO | DESCRIPTION | QTY |
|------|---------|---|-----|
| 1 | 12713 | MECHANICAL SEAL ASSEMBLY | 1 |
| 2 | 12901 | SS REAR BRACKET WASHER | 4 |
| 3 | 12717 | O-RING FOR SCREW HEAD | 4 |
| 4 | M12712 | 2" FP MANIFOLD PUMP BODY ASSEMBLY | 1 |
| 5 | 12705 | POLY PUMP CHECK VALVE | 1 |
| 6 | 12900 | SS UPPER VOLUTE SCREW | 1 |
| 7 | 12725 | SS VOLUTE SCREWS | 2 |
| 8 | 12719A | BODY O-RING | 1 |
| 9 | 12754 | O-RING SEGMENT | 1 |
| 10 | 12720 | SS BODY SCREWS | 10 |
| 11 | V07018 | SS LOCK WASHERS | 10 |
| 12 | V07019 | SS BODY NUTS | 10 |
| 13 | 12775A | IMPELLER HEX NUT | 1 |
| 14 | 12902A | IMPELLER KEY | 1 |
| 15 | 12702A | POLY PUMP VOLUTE | 1 |
| 16 | 12772 | 5 VANE IMPELLER | 1 |
| 16 | 12771A | 3 VANE IMPELLER | 1 |
| 17 | 12703A | POLY PUMP REAR BRACKET | 1 |
| 18 | 12710 | O-RING FOR SEAL ASSEMBLY | 1 |
| 19 | 12716 | POLY PUMP SLINGER | 1 |
| 20 | 12765A | SS IMPELLER BOLT | 1 |
| 21 | A204 | O-RING | 1 |
| 22 | 12715A | SS BRACKET SCREWS | 4 |
| KIT | 12000A | POLY PUMP EPDM REPAIR KIT (ITEMS 2,4,7,8,14, 17,19,21,30, 12099) | 1 |
| KIT | 12000AV | POLY PUMP FKM REPAIR KIT (ITEMS 2,4,7,8,14, 17,19,21,30, 12099) | 1 |
| KIT | 12999A | PUMP SEAL/O-RING KIT (ITEMS 2,4,7,8,17,19,21,30, 12099) | 1 |
| KIT | 12999AV | FKM PUMP SEAL/O-RING KIT (ITEMS 4-7,8,10,18, 23 & 12099) | 1 |

KITS 2" POLY PUMPS

| PART NO | EPDM REPAIR KIT NO | FKM REPAIR KIT NO | EPDM SEAL KIT NO | FKM SEAL KIT NO |
|-----------|--------------------|-------------------|------------------|-----------------|
| M220PH5 | 12000A | 12000AV | 12999A | 12999AV |
| M220PH6 | 12000A | 12000AV | 12999A | 12999AV |
| M220P6PRO | 12000A | 12000AV | 12999A | 12999AV |
| M225PO | 12000A | 12000AV | 12999A | 12999AV |

SEE 12000A & 12000AV KIT DRAWING ON PAGE 99



CENTRIFUGAL PUMPS

2" POLY MANIFOLD WET SEAL PUMPS

FEATURES

- Run dry capability
- Double seal contained in ethylene glycol reservoir. Carbon ceramic seal faces with stainless steel cup and spring with EPDM rubber
- Pump end separated from engine
- Large weep holes between pump and engine
- V-shaped for quicker priming
- See pages 41-47 on manifold fittings for easy plumbing.



2" POLY MANIFOLD WET SEAL PUMPS W/GAS ENGINES

| PART NO | DESCRIPTION | HP | QTY | SKID QTY |
|----------|---|-----|-----|----------|
| M220PH5W | 2" POLY MANIFOLD WET SEAL PUMP W/5.5 HP HONDA® ENGINE | 5.5 | 1 | 12 |



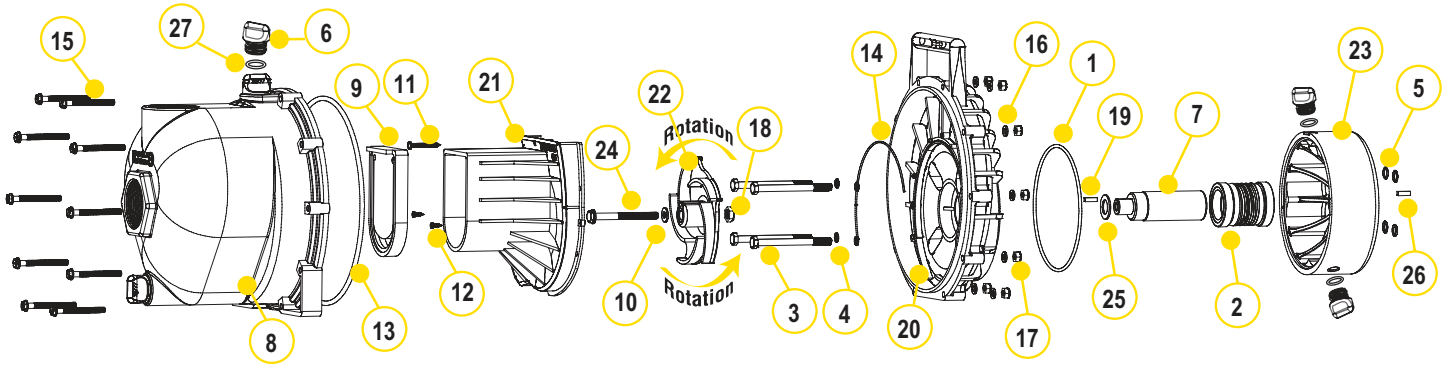
WARNING! DO NOT RUN PUMP DRY, RESTRICT OR REDUCE PORT SIZES OR DEAD HEAD PUMP



WARNING! DO NOT USE WITH FLAMMABLE LIQUIDS

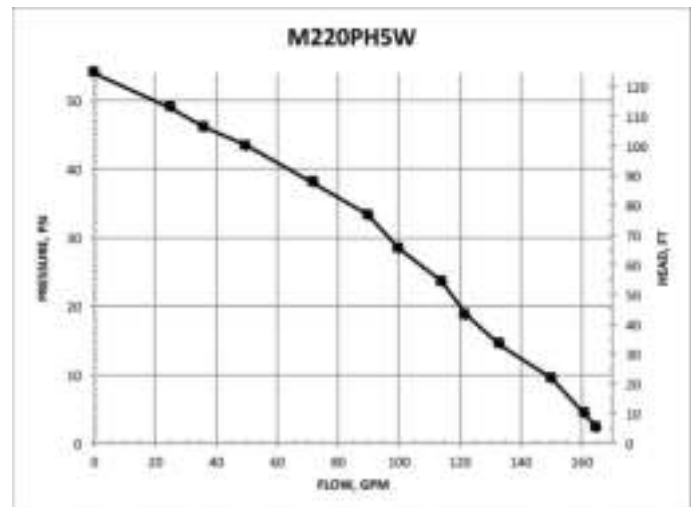
CENTRIFUGAL PUMPS

2" POLY MANIFOLD WET SEAL PUMPS



REPLACEMENT PARTS 2" POLY PUMPS

| ITEM | PART NO | DESCRIPTION | QTY |
|------|---------|--|-----|
| 1 | 13719 | O-RING | 1 |
| 2 | 15035E | EPDM MECHANICAL SEAL ASSEMBLY | 1 |
| 3 | 13034 | $\frac{5}{16}$ " -24 X 3 $\frac{3}{4}$ " HHCS | 4 |
| 4 | 12717 | O-RING FOR BRACKET SCREW | 4 |
| 5 | 12709 | O-RING | 4 |
| 6 | 12777 | $\frac{1}{2}$ " PLUG | 4 |
| 7 | 12155 | ADAPTER SHAFT | 1 |
| 8 | M12712 | 2" FP MANIFOLD PUMP BODY ASSEMBLY | 1 |
| 9 | 12705 | CHECK VALVE | 1 |
| 10 | A204 | IMPELLER BOLT GASKET | 1 |
| 11 | 12900 | #10 X 1 $\frac{1}{2}$ " PPH SMS | 1 |
| 12 | 12725 | #6 X $\frac{1}{2}$ " PPH SMS | 2 |
| 13 | 12719A | BODY O-RING | 1 |
| 14 | 12754 | O-RING SEGMENT | 1 |
| 15 | 12720 | $\frac{1}{4}$ " - 20 X 2 $\frac{1}{2}$ " SL IND HWHS | 10 |
| 16 | V07018 | $\frac{1}{4}$ " LOCK WASHER | 10 |
| 17 | V07019 | $\frac{1}{4}$ " - 20 HEX NUT | 10 |
| 18 | 12775A | $\frac{7}{16}$ " - 14 HEX NUT | 1 |
| 19 | 12902A | $\frac{3}{16}$ " SQ. X $\frac{5}{8}$ " KEY | 2 |
| 20 | 12707W | WET SEAL REAR BRACKET | 1 |
| 21 | 12702A | VOLUTE | 1 |
| 22 | 12772 | 5 VANE IMPELLER | 1 |
| 23 | 12202W | WET SEAL RESERVOIR | 1 |
| 24 | 12766 | $\frac{5}{16}$ " - 24 X 3 $\frac{1}{4}$ " HFS | 1 |
| 25 | CV10175 | GASKET | 1 |
| 26 | 12902A | $\frac{1}{4}$ " SQ. $\frac{3}{4}$ " KEY STOCK | 1 |
| 27 | UV15163 | O-RING FOR DRAIN PLUG | 4 |



CENTRIFUGAL PUMPS

3" POLY PUMPS

FEATURES

- Pump end separated from engine
- Large weep holes between pump and engine
- V-shaped for quicker priming
- Pump only comes unassembled



3" POLY PUMPS W/GAS ENGINES

| PART NO | DESCRIPTION | HP | QTY | SKID QTY |
|-----------|--|-----|-----|----------|
| 300PH-6 | 3" POLY PUMP W/6.5 HP HONDA® ENGINE | 6.5 | 1 | 16 |
| 300P11PRO | 3" POLY PUMP W/11 HP BRIGGS & STRATTON® ENGINE PRO SERIES W/ELECTRIC START & PULL ROPE | 11 | 1 | 8 |



WARNING! DO NOT RUN PUMP DRY, RESTRICT OR REDUCE PORT SIZES OR DEAD HEAD PUMP



WARNING! DO NOT USE WITH FLAMMABLE LIQUIDS



3" POLY BEARING PEDESTAL

| PART NO | DESCRIPTION | HP | QTY | SKID QTY |
|---------|--|-----|-----|----------|
| 300PB | 3" POLY BEARING PEDESTAL W/ 3/4" SHAFT & 4 VANE IMPELLER | N/A | 1 | 18 |

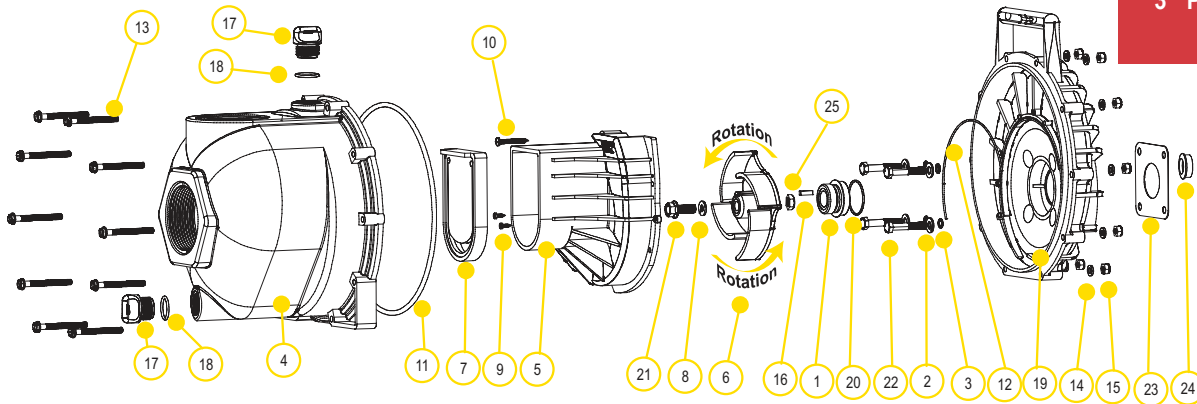


3" POLY PUMP ONLY

| PART NO | DESCRIPTION | HP | QTY | SKID QTY |
|---------|---|-----|-----|----------|
| 300PO | 3" POLY PUMP ONLY W/ 3/4" SHAFT & 4 VANE IMPELLER | N/A | 1 | 27 |

CENTRIFUGAL PUMPS

3" POLY PUMPS



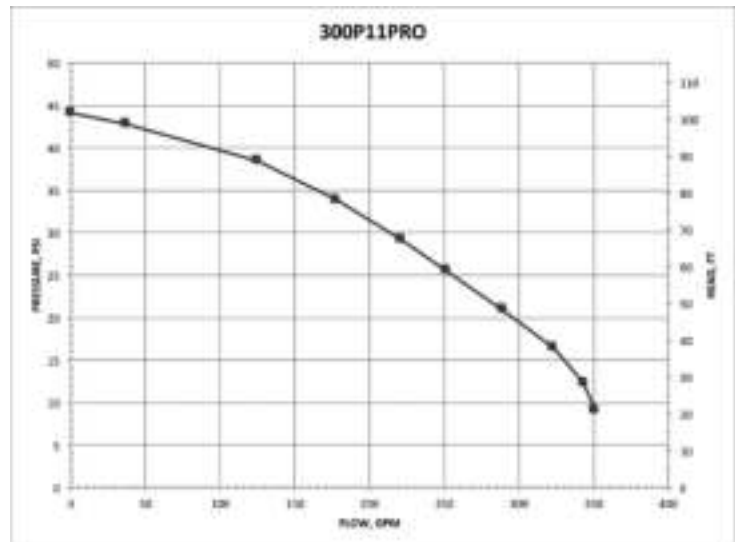
REPLACEMENT PARTS 3" POLY PUMPS

| ITEM | PART NO | DESCRIPTION | QTY |
|------|---------|---|-----|
| 1 | 12713 | SEAL ASSEMBLY | 1 |
| 2 | 12901 | SS REAR BRACKET WASHER | 1 |
| 3 | 12717 | O-RING FOR SCREW HEAD | 1 |
| 4 | 13712 | BODY ASSEMBLY | 1 |
| 5 | 13702 | POLY PUMP VOLUTE | 1 |
| 6 | 13771 | 4 VANE TRIMMED IMPELLER (300PH-6, 300PB & 300PO) | 1 |
| 6 | 13772 | 4 VANE IMPELLER (300P11PRO) | 1 |
| 7 | 12705 | CHECK VALVE | 1 |
| 8 | A204 | O-RING | 1 |
| 9 | 12900 | SS UPPER VOLUTE SCREW | 1 |
| 10 | 12725 | SS VOLUTE SCREWS | 1 |
| 11 | 12719A | BODY O-RING | 1 |
| 12 | 12754 | O-RING SEGMENT | 1 |
| 13 | 12720 | SS BODY SCREWS | 1 |
| 14 | V07018 | SS LOCK WASHERS | 1 |
| 15 | V07019 | SS BODY NUTS | 1 |
| 16 | 12902A | IMPELLER KEY | 1 |
| 17 | 13777 | 3/4" PLUG | 1 |
| 18 | 13778 | O-RING | 1 |
| 19 | 12703A | POLY PUMP REAR BRACKET | 1 |
| 20 | 12710 | O-RING FOR SEAL ASSEMBLY | 1 |
| 21 | 12765A | SS IMPELLER BOLT 3/16 X 24 X 1.12 (300PH-6) | 1 |
| 21 | 13765 | SS IMPELLER BOLT 3/8 X 24 X 1.75 (300P11PRO) | 1 |
| 22 | 12715A | SS BRACKET SCREWS | 1 |
| 23 | 15751 | REAR BRACKET SHIM | 1 |
| 24 | 12716 | POLY PUMP SLINGER | 1 |
| 25 | 12775A | IMPELLER HEX NUT | 1 |
| N/S | 12882A | BEARING PEDESTAL | 1 |
| N/S | 12099 | 7/16"-14 X 1.25" HHCS | 1 |
| N/S | 12000A | POLY PUMP EPDM REPAIR KIT (ITEMS 1, 3, 6-8, 11, 12, 16, 18, 20, 24 & 12099) | 1 |
| N/S | 13999 | PUMP SEAL/O-RING KIT (ITEMS 1, 3, 8, 11, 12, 18, 20, 24 & 12099) | 1 |

KITS 3" POLY PUMPS

| PART NO | EPDM REPAIR KIT NO | EPDM SEAL KIT NO |
|-----------|--------------------|------------------|
| 300PH-6 | 12000A | 13999 |
| 300P11PRO | N/A | 13999 |
| 300PB | 12000A | 13999 |
| 300PO | 12000A | 13999 |

SEE 12000A KIT DRAWING ON PAGE 99



CENTRIFUGAL PUMPS

3" POLY MANIFOLD PUMPS

FEATURES

- Pump end separated from engine
- Large weep holes between pump and engine
- V-shaped for quicker priming
- Pump only comes unassembled
- See pages 41-47 on manifold fittings for easy plumbing.



3" POLY MANIFOLD PUMPS W/GAS ENGINES

| PART NO | DESCRIPTION | HP | QTY | SKID QTY |
|------------|--|-----|-----|----------|
| M300PH6 | 3" POLY MANIFOLD PUMP W/6.5 HP HONDA® ENGINE | 6.5 | 1 | 12 |
| M300P11PRO | 3" POLY MANIFOLD PUMP W/11 HP BRIGGS & STRATTON® PRO SERIES W/ELECTRIC START & PULL ROPE | 11 | 1 | 12 |



WARNING! DO NOT RUN PUMP DRY, RESTRICT OR REDUCE PORT SIZES OR DEAD HEAD PUMP



WARNING! DO NOT USE WITH FLAMMABLE LIQUIDS



3" POLY MANIFOLD BEARING PEDESTAL

| PART NO | DESCRIPTION | HP | QTY | SKID QTY |
|---------|---|-----|-----|----------|
| M300PB | 3" POLY MANIFOLD BEARING PEDESTAL W/ 3/4" SHAFT & 4 VANE IMPELLER | N/A | 1 | 18 |

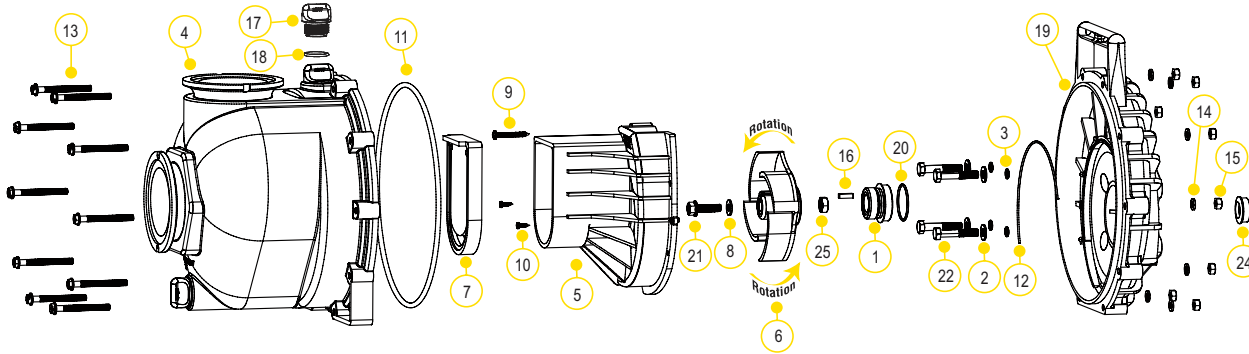


3" POLY MANIFOLD PUMP ONLY

| PART NO | DESCRIPTION | HP | QTY | SKID QTY |
|---------|--|-----|-----|----------|
| M300PO | 3" POLY MANIFOLD PUMP ONLY W/ 3/4" SHAFT & 4 VANE IMPELLER | N/A | 1 | 27 |

CENTRIFUGAL PUMPS

3" POLY MANIFOLD PUMPS

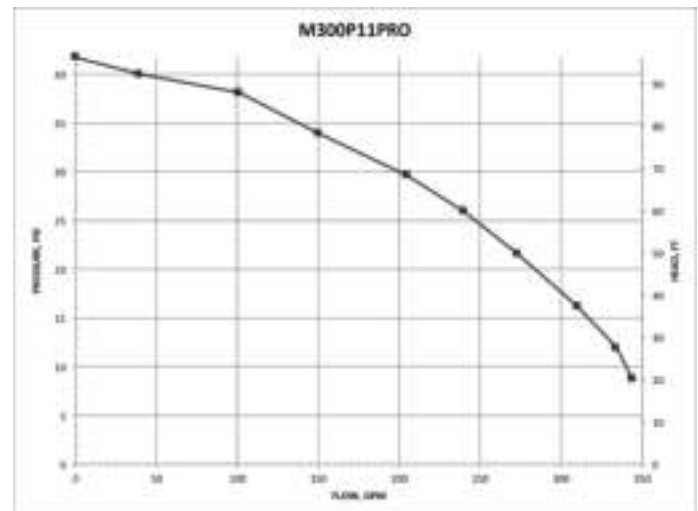


REPLACEMENT PARTS 3" POLY MANIFOLD PUMPS

| ITEM | PART NO | DESCRIPTION | QTY |
|------|---------|---|-----|
| 1 | 12713 | SEAL ASSEMBLY | 1 |
| 2 | 12901 | SS REAR BRACKET WASHER | 4 |
| 3 | 12717 | O-RING FOR SCREW HEAD | 4 |
| 4 | M13712 | MANIFOLD BODY ASSEMBLY | 1 |
| 5 | 13702 | POLY PUMP VOLUTE | 1 |
| 6 | 13771 | 4 VANE TRIMMED IMPELLER (M300PH-6, M300PB & M300PO) | 1 |
| 6 | 13772 | 4 VANE IMPELLER (M300P11PRO) | 1 |
| 7 | 12705 | CHECK VALVE | 1 |
| 8 | A204 | O-RING | 1 |
| 9 | 12900 | SS UPPER VOLUTE SCREW | 4 |
| 10 | 12725 | SS VOLUTE SCREWS | 2 |
| 11 | 12719A | BODY O-RING | 1 |
| 12 | 12754 | O-RING SEGMENT | 1 |
| 13 | 12720 | SS BODY SCREWS | 10 |
| 14 | V07018 | SS LOCK WASHERS | 10 |
| 15 | V07019 | SS BODY NUTS | 10 |
| 16 | 12902A | IMPELLER KEY | 1 |
| 17 | 13777 | 3/4" PLUG | 2 |
| 18 | 13778 | O-RING | 2 |
| 19 | 12703A | POLY PUMP REAR BRACKET | 1 |
| 20 | 12710 | O-RING FOR SEAL ASSEMBLY | 1 |
| 21 | 12765A | SS IMPELLER BOLT 5/16 X 24 X 1.12 (-6) | 1 |
| 21 | 13765 | SS IMPELLER BOLT 3/8 X 24 X 1.75 (M300P11PRO) | 1 |
| 22 | 12715A | SS BRACKET SCREWS | 4 |
| 23 | 15751 | REAR BRACKET SHIM | 1 |
| 24 | 12716 | POLY PUMP SLINGER | 1 |
| 25 | 12775A | IMPELLER HEX NUT | 1 |
| N/S | 12882A | BEARING PEDESTAL | 1 |
| N/S | 12099 | 7/16"-14 X 1.25" HHCS | 1 |
| N/S | 12000A | POLY PUMP EPDM REPAIR KIT (ITEMS 1, 3, 6-8, 11, 12, 16, 18, 20, 24 & 12099) | 1 |
| N/S | 13999 | PUMP SEAL/O-RING KIT (ITEMS 1, 3, 8, 11, 12, 18, 20, 24 & 12099) | 1 |

KITS 3" POLY PUMPS

| PART NO | EPDM REPAIR KIT NO | EPDM SEAL KIT NO |
|------------|--------------------|------------------|
| M300PH6 | 12000A | 13999 |
| M300P11PRO | N/A | 13999 |
| M300PB | 12000A | 13999 |
| M300PO | 12000A | 13999 |



CENTRIFUGAL PUMPS

3" POLY PUMPS WITH HYDRAULIC MOTORS

FEATURES

- Precision molded construction
- Lightweight
- Corrosion resistant
- Low maintenance
- Hydraulic fluid capacity is minimum 6 gallons and maximum 10 gallons
- Open or closed system
- 3600 R.P.M.
- Recommendation to use the motor spool control valve or a suitable equivalent. The lack of such a valve in this circuit may cause failure to the hydraulic motor.



3" POLY PUMPS W/HYDRAULIC MOTORS

| PART NO | DESCRIPTION | HP | QTY | SKID QTY |
|---------|---|-----|-----|----------|
| 300PHY | 3" POLY PUMP W/12 HP H YDRAULIC MOTOR | 12 | 1 | 18 |
| 300PHYW | 3" POLY WET SEAL PUMP W/12 HP HYDRAULIC MOTOR | 12 | 1 | 12 |
| 305PHAW | 3" POLY WET SEAL PUMP W/5 VANE IMPELLER W/OUT HYDRAULIC MOTOR | N/A | 1 | 18 |

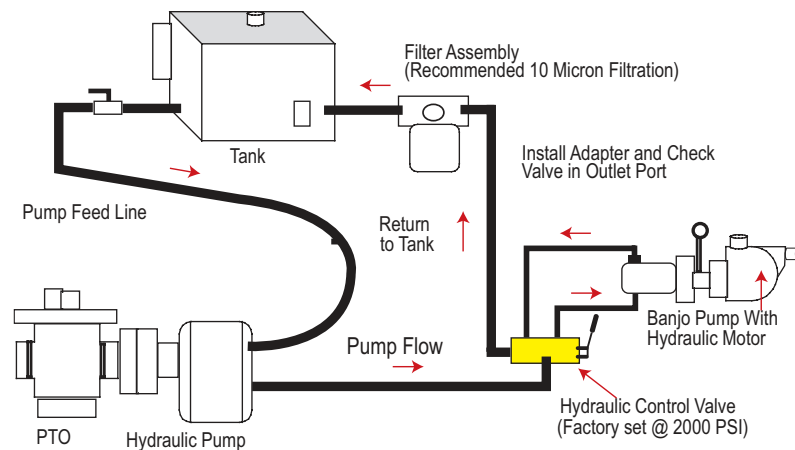


WARNING! DO NOT RUN PUMP DRY, RESTRICT OR REDUCE PORT SIZES OR DEAD HEAD PUMP



WARNING! DO NOT USE WITH FLAMMABLE LIQUIDS

SPOOL VALVE ASSEMBLY DIAGRAM

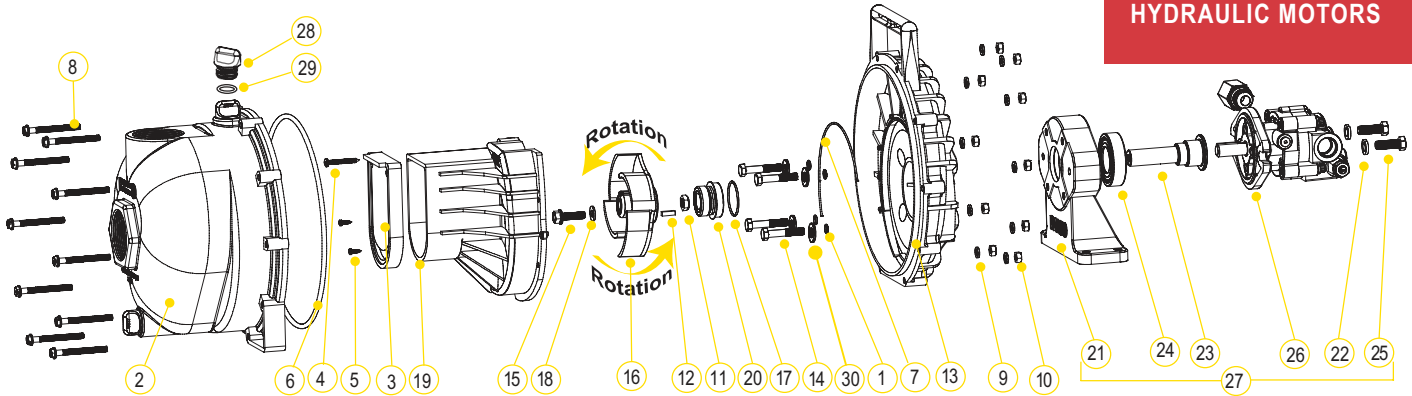


HYDRAULIC MOTOR SPOOL VALVE

| PART NO | DESCRIPTION | HP | QTY |
|---------|-----------------------------|-----|-----|
| HSV1000 | HYDRAULIC MOTOR SPOOL VALVE | N/A | 1 |

CENTRIFUGAL PUMPS

3" POLY PUMPS WITH HYDRAULIC MOTORS



REPLACEMENT PARTS 3" POLY PUMPS

| ITEM | PART NO | DESCRIPTION | QTY |
|------|---------|---|-----|
| 1 | 12717 | O-RING FOR SCREW HEADS | 4 |
| 2 | 13712 | BODY ASSEMBLY | 1 |
| 3 | 12705 | CHECK VALVE | 1 |
| 4 | 12900 | SS UPPER VOLUTE SCREW | 4 |
| 5 | 12725 | SS VOLUTE SCREWS | 2 |
| 6 | 12719A | BODY O-RING | 1 |
| 7 | 12754 | O-RING SEGMENT | 1 |
| 8 | 12720 | SS BODY SCREWS | 10 |
| 9 | V07018 | SS LOCK WASHERS | 10 |
| 10 | V07019 | SS BODY NUTS | 10 |
| 11 | 12775A | IMPELLER HEX NUT | 1 |
| 12 | 12902A | IMPELLER KEY | 1 |
| 13 | 12703A | POLY PUMP REAR BRACKET | 1 |
| 14 | 12715A | 5/16"-24 X 1.75" HHCS | 4 |
| 15 | 12765A | SS IMPELLER BOLT | 1 |
| 16 | 13772 | TRIMMED 4 VANE IMPELLER | 1 |
| 17 | 12710 | O-RING FOR SEAL ASSEMBLY | 1 |
| 18 | A204 | O-RING | 1 |
| 19 | 13702 | POLY PUMP VOLUTE | 1 |
| 20 | 12713 | MECHANICAL SEAL ASSEMBLY | 1 |
| 21 | 12049F | HYDRAULIC PEDESTAL HOUSING (MUST ORDER 17056E & 12055E) | 1 |
| 22 | V20018 | 3/8" LOCK WASHER | 2 |
| 23 | 12055E | ADAPTER SHAFT | 1 |
| 24 | 17056E | BEARING | 1 |
| 25 | 18010SS | 3/8" - 16 X 1 1/8" SS CAP SCREW HXHD | 2 |
| 26 | HY1013 | HYDRAULIC MOTOR | 1 |
| 27 | 12600B | COMPLETE HYDRAULIC ASSEMBLY | 1 |
| 28 | 13777 | 3/4" PLUG | 2 |
| 29 | 13778 | O-RING | 2 |
| 30 | 12901 | SS REAR BRACKET WASHER (300PHY) | 4 |
| N/S | HY1003 | HYDRAULIC MOTOR SEAL KIT | 1 |
| KIT | 12000A | POLY PUMP EPDM REPAIR KIT (ITEMS 1, 3, 6, 7, 16, 18, 20, 29, 12099) | 1 |
| KIT | 13999 | PUMP SEAL/O-RING KIT (ITEMS 2,4,7-8,16,18,19, 21, 30, 12099) | 1 |

KITS 3" POLY PUMPS

| PART NO | EPDM REPAIR KIT NO | EPDM SEAL KIT NO | HYDRAULIC MOTOR SEAL KIT |
|---------|--------------------|------------------|--------------------------|
| 300PHY | 12000A | 13999 | HY1003 |

HYDRAULIC MOTOR DATA

| | |
|------------------------|------------------------|
| U.S. GALLONS/REV. | 0.0025 |
| CUBIC INCHES/REV. | 0.580 |
| LITERS/REV. | 0.0097 |
| MAX HYDRAULIC PRESSURE | 2000 PSI |
| MIN HYDRAULIC PRESSURE | 200 PSI |
| INLET PORT | SAE 10 (7/8-14 UNF-2B) |
| OUTLET PORT | SAE 10 (7/8-14 UNF-2B) |
| MINIMUM GPM REQUIRED | 6 GPM 2400 RPM |
| MAXIMUM GPM REQUIRED | 10 GPM 4000 RPM |
| IDEAL GPM REQUIRED | 9 GPM 3600 RPM |

CONNECTION INFORMATION

| | |
|--------|----------|
| INLET | "A" PORT |
| OUTLET | "B" PORT |

SUPPLIED CHECK VALVE IS TO ENSURE PROPER ROTATION OF THE BANJO PUMP. PLACE CHECK VALVE IN OUTLET PORT (MARKED "B") FOR PROPER RIGHT HAND ROTATION.

SPOOL VALVE INFORMATION

| | |
|--------------------------|----------------------------|
| REQUIRED OUTLET FLOW | MIN 6 GPM / MAX 10 GPM |
| REQUIRED SYSTEM PRESSURE | MIN 600 PSI / MAX 3000 PSI |

